

**WonderWink®**

**FOR GROUPS**

**SPRING 2019**

THE SIMPLE SOLUTION FOR YOUR GROUP IDENTITY AND IMAGING NEEDS





# WONDERWINK FOR GROUPS

## OUR GUARANTEE:



**DELIVERY**  
Quick and efficient

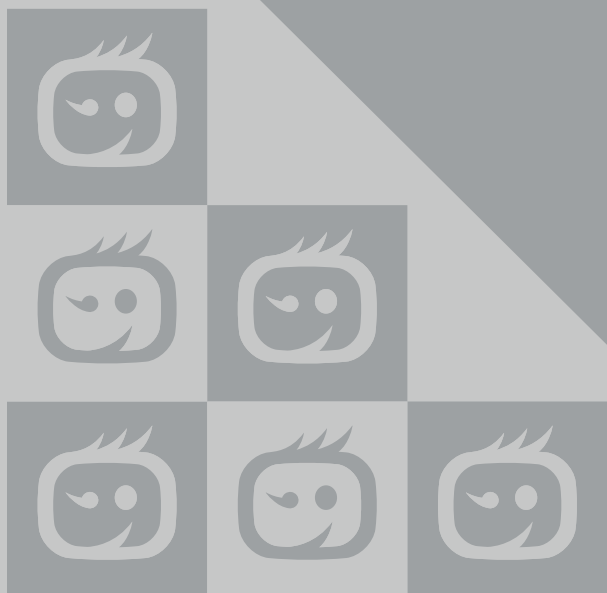


**SELECTION**  
Variety of fabrics, styles, fit, color, and sizes



**VALUE**  
Superior quality, great price

**THE  
SIMPLE  
SOLUTION  
FOR GROUP  
IDENTITY AND  
IMAGING NEEDS**



# EVERYTHING YOU NEED UNDER ONE ROOF

WonderWink's secret to success is our ongoing commitment to crafting cutting-edge uniforms that yield powerful results. Choose from a variety of our tried-and-true bestsellers to ensure the perfect styling, fit and industry standard colors to meet your needs.



KEEPS YOU COOL  
STRETCH FABRIC  
SOIL RELEASE  
MOISTURE WICKING



FASHION FITS FOR ALL SHAPES & SIZES  
LEADING-EDGE MICROFIBER  
TECHNOLOGY  
FUNCTIONAL UTILITY



TOP TIER FABRIC & DESIGN  
EMBROIDERY-FRIENDLY  
EXCEPTIONAL VALUE



ACTIVE TWILL  
MOTION STRETCH  
FLEXIBLE FIT  
LIVE-IN COMFORT



## INNOVATIVE ACTIVE Twill

Our WonderWink WonderWORK Active Twill fabric is constructed using finer, more durable yarns. The combination of these elements allows for beautiful drape and exquisite hand, without sacrificing dependability & professionalism.



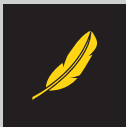
## 360 DEGREE MOTION STRETCH

Our Active Twill has just raised the bar. Using an industry favorite fabric blend, 65% Polyester/35% Cotton, we have enhanced the performance by adding mechanical Motion Stretch without incorporating a spandex yarn. This provides the lasting durability of a Poly/Cotton blend, with the movement of a stretch fabric.



## FORMULATED FLEXIBLE FIT

Paying close attention to every fit detail, we have approached our fit method differently by tailoring each size individually and in respect to the wearer. Our plus sizing is designed and built specifically for a fuller figure. On all styles, we have added slight shaping where it flatters but allowed for the necessary ease resulting in a relaxed, modern fit. Our Flexible Fit provides a full range of movement.



## REDEFINED LIVE-IN COMFORT

WonderWink WonderWORK styling remains polished without sacrificing function: utilitarian details provide storage for gadgets and gear while maintaining a clean, professional appearance. With the innovative fabric, fit, and styling, these everyday scrubs truly redefine Live-in Comfort.





Discover  
the *difference.*

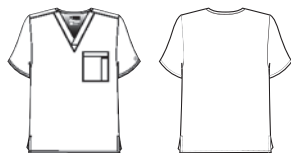


## UNISEX V-NECK TOP

100



- Unisex Fit.
- One double chest pocket with utility loop.
- Vented sides.



BLAC, CARI, CEIL, CHOC, EGGP, FUSA, GALA,  
GRAP, GREY, HUNT, KHAK, LTUR, NAVY, OLIV,  
PEWT, REDT, ROYA, SURG, TEAL, WHIT, WINE

65% Polyester / 35% Cotton

**XXS - 5X**  
Size M length: 27 ¾"

## WOMEN'S V-NECK TOP

101



- Women's Classic Fit and True-Plus Fit.
- Two front lower pockets with utility loop, one pen slot, and one cell phone pocket.
- Soft line V-neck shape.
- Vented sides.



BLAC, CARI, CEIL, CHOC, EGGP, FUSA, GALA,  
GRAP, GREY, HUNT, KHAK, LTUR, NAVY, OLIV,  
PEWT, REDT, ROYA, SURG, TEAL, WHIT, WINE

65% Polyester / 35% Cotton

**XXS - 5X**  
Size M length: 28 ½"

black <b>BLAC</b>	caribbean <b>CARI</b>	cell blue <b>CEIL</b>	chocolate <b>CHOC</b>	eggplant <b>EGGP</b>	fuchsia <b>FUSA</b>	galaxy blue <b>GALA</b>	grape <b>GRAP</b>	grey <b>GREY</b>	hunter <b>HUNT</b>	khaki <b>KHAK</b>
----------------------	--------------------------	--------------------------	--------------------------	-------------------------	------------------------	----------------------------	----------------------	---------------------	-----------------------	----------------------

WOMEN'S  
**MOCK WRAP TOP**

102



- Women's Classic Fit and True-Plus Fit.
- Two front lower slash pockets, one cell phone pocket tucked away discreetly at wearer's right pocket.
- Slimming, sporty princess seam lines for added shape.
- Vented sides.



BLAC, CARI, CEIL, CHOC, EGGP, FUSA, GALA, GRAP, GREY, HUNT, KHAK, LTUR, NAVY, OLIV, PEWT, REDT, ROYA, SURG, TEAL, WHIT, WINE

65% Polyester / 35% Cotton

**XXS - 5X**  
Size M length: 28 ¼"

MEN'S  
**V-NECK TOP**

103



- Men's Classic Fit.
- Two front lower pockets and one double chest pocket with utility loop.
- Modified V-neck and shoulder detail for a sporty, masculine look.
- Longer back length.
- Vented sides.



BLAC, CARI, CEIL, CHOC, GALA, GRAP, GREY, KHAK, HUNT, NAVY, OLIV, PEWT, REDT, ROYA, SURG, TEAL, WHIT, WINE

65% Polyester / 35% Cotton

**XS - 5X**  
Size M length: 31"

light turquoise  
**LTUR**

navy  
**NAVY**

olive  
**OLIV**

pewter  
**PEWT**

red  
**REDT**

royal  
**ROYA**

surgical green  
**SURG**

teal  
**TEAL**

white  
**WHIT**

wine  
**WINE**



## WOMEN'S SHORT SLEEVE SNAP FRONT TOP

200



- Women's Classic Fit and True-Plus Fit.
- Two front lower pockets with utility loop, one pen slot, and one cell phone pocket.
- Easy front snap closure.
- Vented sides.



BLAC, CEIL, CHOC, GREY, HUNT, KHAK, NAVY, PEWT, ROYA, WHIT, WINE

65% Polyester / 35% Cotton

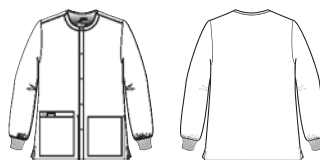
**XXS - 5X**  
Size M length: 27 ¾"

## UNISEX SNAP FRONT JACKET

800



- Unisex Fit.
- Two front lower pockets with utility loop, one pen slot, one cell phone pocket, and one inside tablet pocket.
- Soft rib knit cuffs.
- Easy front snap closure.
- Vented sides.



BLAC, CARI, CEIL, CHOC, EGGP, FUSA, GAIA, GRAP, GREY, HUNT, KHAK, LTUR, NAVY, OLIV, PEWT, REDT, ROYA, SURG, TEAL, WHIT, WINE

65% Polyester / 35% Cotton

**XXS - 5X**  
Size M length: 29 ¾"

## UNISEX DRAWSTRING CARGO PANT

500



- Unisex Fit.
- Natural rise with a full drawstring waist.
- One cargo pocket with utility loop, one pen slot one cell phone pocket, and one back pocket.



BLAC, CARI, CEIL, CHOC, EGGP, FUSA, GALA, GRAP, GREY, HUNT, KHAK, LTUR, NAVY, OLIV, PEWT, REDT, ROYA, SURG, TEAL, WHIT, WINE

65% Polyester / 35% Cotton

**XXS - 5X, Short: XXS - 3X, Tall: XS - 3X**  
Size M leg opening: 9"

black <b>BLAC</b>	caribbean <b>CARI</b>	cell blue <b>CEIL</b>	chocolate <b>CHOC</b>	eggplant <b>EGGP</b>	fuchsia <b>FUSA</b>	galaxy blue <b>GALA</b>	grape <b>GRAP</b>	grey <b>GREY</b>	hunter <b>HUNT</b>	khaki <b>KHAK</b>
----------------------	--------------------------	--------------------------	--------------------------	-------------------------	------------------------	----------------------------	----------------------	---------------------	-----------------------	----------------------

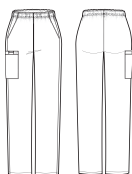


WOMEN'S  
**PULL-ON CARGO PANT**

501



- Women's Classic Fit and True-Plus Fit.
- Full elastic waist, front rise sits slightly below natural waist with back rise being a bit higher for more coverage.
- Two front slash pockets, one cargo pocket with utility loop, one pen slot, and one cell phone pocket.



BLAC, CARI, CEIL, CHOC, EGGP, FUSA, GALA, GRAP, GREY, HUNT, KHAK, LTUR, NAVY, OLIV, PEWT, REDT, ROYA, SURG, TEAL, WHIT, WINE

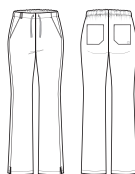
65% Polyester / 35% Cotton

WOMEN'S  
**FLARE LEG PANT**

502



- Women's Classic Fit and True-Plus Fit.
- Back elastic waist with full adjustable drawstring, front rise sits slightly below natural waist with back rise being a bit higher for more coverage.
- Two front slash pockets and two back pockets.
- Utility belt loop.
- Vented bottom.



BLAC, CARI, CEIL, CHOC, EGGP, FUSA, GALA, GRAP, GREY, HUNT, KHAK, LTUR, NAVY, OLIV, PEWT, REDT, ROYA, SURG, TEAL, WHIT, WINE

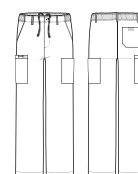
65% Polyester / 35% Cotton

MEN'S  
**CARGO PANT**

503



- Men's Classic Fit.
- Fully constructed waist, functional fly with button closure, full inner drawstring, back elastic, and five belt loops.
- Two front slash pockets, two cargo pockets including one double cargo pocket, one pen slot, one cell phone pocket, and one back pocket.



BLAC, CARI, CEIL, CHOC, GALA, GRAP, GREY, KHAK, HUNT, NAVY, OLIV, PEWT, REDT, ROYA, SURG, TEAL, WHIT, WINE

65% Polyester / 35% Cotton

**XXS - 5X, Petite: XXS - 3X, Tall: XS - 3X**  
Size M leg opening: 9"

**XXS - 5X, Petite: XXS - 3X, Tall: XS - 3X**  
Size M leg opening: 10 1/4"

**XS - 5X, Short: XS - 3X, Tall: XS - 3X**  
Size M leg opening: 9 3/4"

light turquoise  
**LTUR**

navy  
**NAVY**

olive  
**OLIV**

pewter  
**PEWT**

red  
**REDT**

royal  
**ROYA**

surgical green  
**SURG**

teal  
**TEAL**

white  
**WHIT**

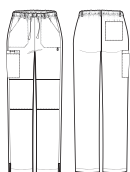
wine  
**WINE**

## WOMEN'S STRAIGHT LEG CARGO PANT

504



- Women's Classic Fit and True-Plus Fit.
- Full elastic waist with full adjustable drawstring, front rise sits slightly below natural waist with back rise being a bit higher for more coverage, five belt loops at waist.
- Two front slash pockets, one back patch pocket, and one double cargo pocket with pen slot and utility loop.
- Signature ID bungee loop at left pocket.
- Vented bottom.



BLAC, CARI, CEIL, CHOC, EGGP, FUSA, GALA, GRAP, GREY, HUNT, KHAK, LTUR, NAVY, OLIV, PEWT, REDT, ROYA, SURG, TEAL, WHIT, WINE

65% Polyester / 35% Cotton

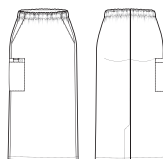
**XXS - 5X, Petite: XXS - 3X, Tall: XS - 3X**  
Size M leg opening: 8 ¾"

## WOMEN'S PULL-ON CARGO SKIRT

701



- Women's Classic Fit and True-Plus Fit.
- Full elastic waist.
- Two slanted front pockets and one double cargo pocket with utility loop and pen slot.



BLAC, CARI, CEIL, CHOC, EGGP, FUSA, GALA, GRAP, GREY, HUNT, KHAK, LTUR, NAVY, PEWT, REDT, ROYA, TEAL, WHIT, WINE

65% Polyester / 35% Cotton

**XS - 5X**  
Size M length: 30 ¼"

## UNISEX SOLID SCRUB CAP

400



- Unisex Fit.
- Back tie closure, covered elastic band.
- Terry cloth sweat band inside.
- WonderWink logo at center back.



BLAC, CARI, CEIL, CHOC, HUNT, KHAK, NAVY, PEWT, REDT, ROYA, TEAL, WHIT, WINE

65% Polyester / 35% Cotton

**One Size**

black  
BLAC

caribbean  
CARI

ceil blue  
CEIL

chocolate  
CHOC

eggplant  
EGGP

fuchsia  
FUSA

galaxy blue  
GALA

grape  
GRAP

grey  
GREY

hunter  
HUNT

khaki  
KHAK

light turquoise  
LTUR

UNISEX  
**VEST**  
300

WOMEN'S  
**SMOCK**  
201

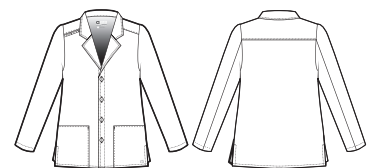
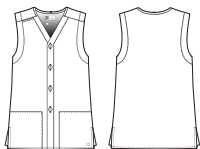
MEN'S  
**BLAZER**  
803



- Unisex Fit.
- Two front lower pockets.
- Forward shoulder and ID badge holder at shoulder.
- Dyed-to-match button closure.
- Vented sides

- Women's Classic Fit and True-Plus Fit.
- Two front lower pockets.
- Forward shoulder and ID badge holder at shoulder. Rounded collar.
- Dyed-to-match button closure.
- Princess seaming for fit.
- $\frac{3}{4}$  sleeve with optional flip cuff.
- Fit feature at inner back.
- Vented sides.

- Men's Classic Fit.
- Two front lower pockets.
- Forward shoulder, ID badge holder at shoulder, and lapel collar.
- Back yoke.
- Dyed-to-match button closure.
- Vented sides.



BLAC, GRAP, HUNT, NAVY, PNKT,  
REDT, ROYA, SALM, TEAL, WINE

BLAC, GRAP, HUNT, NAVY, PNKT,  
REDT, ROYA, SALM, TEAL, WINE

BLAC, GRAP, HUNT, NAVY, REDT,  
ROYA, SALM, TEAL, WINE

65% Polyester / 35% Cotton

65% Polyester / 35% Cotton

65% Polyester / 35% Cotton

**XS - 3X**  
Size M length: 29  $\frac{3}{4}$ "

**XS - 3X**  
Size M length: 29  $\frac{1}{4}$ "

**XS - 3X**  
Size M length: 30"

navy <b>NAVY</b>	olive <b>OLIV</b>	pewter <b>PEWT</b>	pink <b>PNKT</b>	red <b>REDT</b>	royal <b>ROYA</b>	salmon <b>SALM</b>	surgical green <b>SURG</b>	teal <b>TEAL</b>	white <b>WHIT</b>	wine <b>WINE</b>
---------------------	----------------------	-----------------------	---------------------	--------------------	----------------------	-----------------------	-------------------------------	---------------------	----------------------	---------------------

## WOMEN'S MATERNITY MOCK WRAP TOP

145



- Women's Classic Fit.
- Two front lower pockets with utility loop, one pen slot, and one cell phone pocket.
- Dyed-to-match knit side panels and front waist tie.
- Longer front length.



BLAC, CARI, CEIL, CHOC, EGGP, FUSA, GALA,  
GRAP, GREY, HUNT, KHAK, LTUR, NAVY, PEWT,  
REDT, ROYA, TEAL, WHIT, WINE

65% Polyester / 35% Cotton

**XS - 3X**  
Size M length 29 1/4"

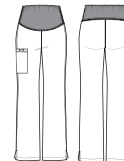
black <b>BLAC</b>	caribbean <b>CARI</b>	ceil blue <b>CEIL</b>	chocolate <b>CHOC</b>	eggplant <b>EGGP</b>	fuchsia <b>FUSA</b>	galaxy blue <b>GALA</b>	grape <b>GRAP</b>	grey <b>GREY</b>	hunter <b>HUNT</b>
	khaki <b>KHAK</b>	light turquoise <b>LTUR</b>	navy <b>NAVY</b>	pewter <b>PEWT</b>	red <b>REDT</b>	royal <b>ROYA</b>	teal <b>TEAL</b>	white <b>WHIT</b>	wine <b>WINE</b>

## WOMEN'S MATERNITY CARGO PANT

545



- Women's Classic Fit.
- Dyed-to-match silky knit waist panel.
- One cargo pocket with utility loop, one pen slot, and one cell phone pocket.
- Vented bottom.















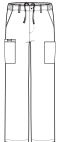




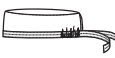
BLAC, CARI, CEIL, CHOC, EGGP, FUSA, GALA,  
GRAP, GREY, HUNT, KHAK, LTUR, NAVY, PEWT,  
REDT, ROYA, TEAL, WHIT, WINE

65% Polyester / 35% Cotton

**XS - 3X**  
Size M leg opening: 8 3/4"



Product		100	101	102	103	200	201	300	800
									
Size (Regular)		XXS - 5X	XXS - 5X	XXS - 5X	XS - 5X	XXS - 5X	XS - 3X	XS - 3X	XXS - 5X
black	BLAC								
caribbean	CARI								
ceil blue	CEIL								
chocolate	CHOC								
eggplant	EGGP								
fuchsia	FUSA								
galaxy blue	GALA								
grape	GRAP								
grey	GREY								
hunter	HUNT								
khaki	KHAK								
light turquoise	LTUR								
navy	NAVY								
olive	OLIV								
pewter	PEWT								
pink	PNKT								
red	REDT								
royal	ROYA								
salmon	SALM								
surgical green	SURG								
teal	TEAL								
white	WHIT								
wine	WINE								

Product		803	500	501	502	503	504	701	145	545	400
											
Regular		XS - 3X	XXS - 5X	XXS - 5X	XXS - 5X	XS - 5X	XXS - 5X	XS-5X	XS - 3X	XS-3X	One Size
Petite / Short			XXS - 3X	XXS - 3X	XXS - 3X	XS - 3X	XXS - 3X				
Tall			XS - 3X	XS - 3X	XS - 3X	XS - 3X	XS - 3X				
black	BLAC										
caribbean	CARI										
ceil blue	CEIL										
chocolate	CHOC										
eggplant	EGGP										
fuchsia	FUSA										
galaxy blue	GALA										
grape	GRAP										
grey	GREY										
hunter	HUNT										
khaki	KHAK										
light turquoise	LTUR										
navy	NAVY										
olive	OLIV										
pewter	PEWT										
red	REDT										
royal	ROYA										
salmon	SALM										
surgical green	SURG										
teal	TEAL										
white	WHIT										
wine	WINE										

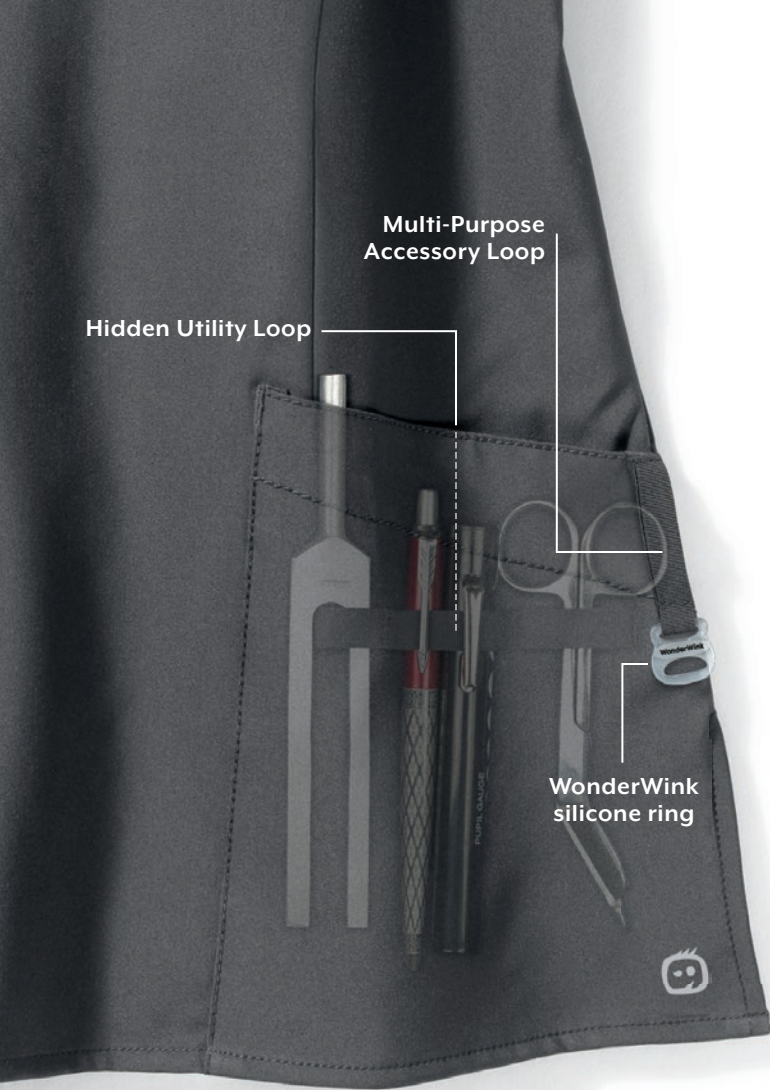


**WI23™**

**THE ESSENTIALS THAT WORK**







## W1 FASHION FIT



Feel comfortable and confident in distinctive styles with an unsurpassed fit. Choose from silhouettes that are tailored for all shapes and body types. Ranging from ladies' petites to True-Plus Fit sizing, each garment delivers a polished and slimming appearance. Men's styles follow suit with a Modern Fit and understated style.

### Women's Modern Fit

### True-Plus Fit

XXS	XS	S	M	L	XL	1X	2X	3X	4X	5X
-----	----	---	---	---	----	----	----	----	----	----

Revolutionizing the industry, these styles are offered in True-Plus Fit sizing. Available in 1X-5X, each garment is fit to comfortably contour and flatter the curves of your body. Eliminate the tugging, the pulling, and the frustration with our attention to fit details such as longer sleeve lengths, higher pant rises, and curvier hips. Find the true-fit for you!

Watch our video at [YouTube](#) to learn more about W123 fit.

Keyword: "WonderWink W123"



## W2 FABRIC



### Leading Edge MicroFiber Technology:

Smart 4-way stretch fabric constructed from flex-adaptive yarn synchronizes with your every movement. Quick-dry wicking fabric pulls moisture away from your body to keep you cool, fresh, and temperature regulated.



### Dimensional Stability:

With no shortage of resiliency, this fabric is shrink proof, fade proof, wrinkle resistant, and able to withstand repeated wash and wear.

## W3 FUNCTION



Standout styling paired with functional utility creates superb organization using spacious pockets, multiple accessory loops, and thoughtful trims.



WOMEN'S  
**STYLIZED V-NECK TOP**

6155



- Women's Modern Fit and True-Plus Fit.
- Two front lower top loading double pockets including sectional pocket, cell phone pocket, and hidden three part utility loop.
- Shoulder badge loop.
- Vented sides.
- WonderWink silicone ring.



BLAC, CARI, CEIL, EGGP, GALA, GRAP, GREY, HTPK,  
HUNT, NAVY, PEWT, ROYA, TEAL, WHIT, WINE

100% microfiber poly 4-way stretch

**XXS - XL, Plus: 1X - 5X**  
Size M length: 27 ¼"

WOMEN'S  
**BASIC V-NECK TOP**

6255



- Women's Classic Fit and True-Plus Fit.
- Two front lower top loading pockets with hidden three part utility loop.
- Shoulder badge loop.
- Vented sides.
- WonderWink silicone ring.



BLAC, CEIL, NAVY, PEWT, ROYA, WHIT

100% microfiber poly 4-way stretch

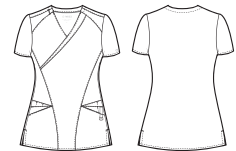
**XS - 3X, Plus: 1X - 5X**  
Size M length: 28 ¼"

WOMEN'S  
**MOCK WRAP TOP**

6455



- Women's Modern Fit and True-Plus Fit.
- Two front lower top loading triple pockets including sectional pocket, cell phone pocket, utility pocket and pen slot.
- Asymmetrical mock wrap top.
- Shoulder badge loop.
- Vented sides.
- WonderWink silicone ring.



BLAC, CARI, CEIL, EGGP, GALA, GRAP, HTPK,  
HUNT, NAVY, PEWT, ROYA, WHIT, WINE

100% microfiber poly 4-way stretch

**XXS - XL, Plus: 1X - 5X**  
Size M length: 27"

black  
**BLAC**

caribbean blue  
**CARI**

ceil blue  
**CEIL**

eggplant  
**EGGP**

galaxy blue  
**GALA**

grape  
**GRAP**

grey  
**GREY**

hot pink  
**HTPK**

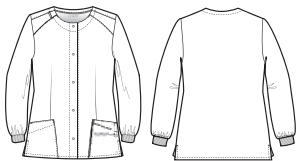


WOMEN'S  
**CREW NECK WARM-UP JACKET**

8155



- Women's Modern Fit and True-Plus Fit.
- Two front lower top loading lower pockets with hidden three part utility loop.
- Shoulder badge loop.
- Vented sides.
- WonderWink silicone ring.



BLAC, NAVY, PEWT, WHIT

100% microfiber poly 4-way stretch

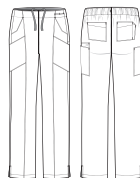
**XXS - XL, Plus: 1X - 5X**  
Size M length: 28 ¼"

WOMEN'S  
**FLAT FRONT DOUBLE CARGO**

5155



- Women's Modern Fit and True-Plus Fit.
- Flat front full elastic waist with inside webbed drawstring.
- Two front slant pockets, two stylized cargo pockets, one cell phone pocket. and two back pockets with pen slot.
- Utility loop at waist.
- Vented bottom.



BLAC, CARI, CEIL, EGGP, GALA, GRAP, GREY, HTPK,  
HUNT, NAVY, PEWT, ROYA, TEAL, WHIT, WINE

100% microfiber poly 4-way stretch

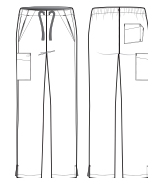
**XXS - XL, Petite: XXS - XL, Tall: XS - XL**  
**Plus: 1X - 5X, Plus Petite: 1X - 3X, Plus Tall: 1X - 3X**  
Size M leg opening: 7 ¾"

WOMEN'S  
**DRAWSTRING PANT**

5255



- Women's Classic Fit and True-Plus Fit.
- Flat front webbed drawstring.
- Two front slant pockets with deco stitching, one cargo pocket, and one back pocket with deco stitching.
- Vented bottom.



BLAC, CEIL, NAVY, PEWT, ROYA, WHIT

100% microfiber poly 4-way stretch

**XXS - XL, Petite: XXS - XL**  
**Plus: 1X - 5X, Plus Petite: 1X - 3X**  
Size M leg opening: 8 ¼"

hunter  
**HUNT**

navy  
**NAVY**

pewter  
**PEWT**

royal  
**ROYA**

teal  
**TEAL**

white  
**WHIT**

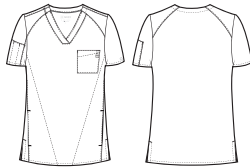
wine  
**WINE**

MEN'S  
**V-NECK TOP**

6355



- Men's Modern Fit.
- Two lower side entry pockets, one chest pocket with utility loop, and pen slot sleeve pocket.
- Shoulder badge loop.
- Vented sides.
- WonderWink silicone ring.

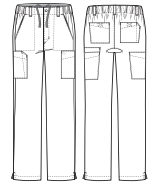


MEN'S  
**FLAT FRONT CARGO POCKET PANT**

5355



- Men's Modern Fit.
- Flat front full elastic waist with zip fly and five belt loops. Inside webbed drawstring.
- Two front slant pockets, two stylized cargo pockets, one cell phone pocket, and two back pockets with pen slot and hook and loop closure.
- Hidden gusset.
- Vented bottom.



BLAC, CARI, CEIL, GALA, GREY, HUNT,  
NAVY, PEWT, ROYA, TEAL, WHIT, WINE

BLAC, CARI, CEIL, GALA, GREY, HUNT,  
NAVY, PEWT, ROYA, TEAL, WHIT, WINE

100% microfiber poly 4-way stretch

100% microfiber poly 4-way stretch

**XS - 5XL**

Size M length: front-29", back-30"

**XS - 5XL, Tall: S - 3XL, Short: XS-3XL**

Size M leg opening: 8 3/4"

black  
**BLAC**

caribbean blue  
**CARI**

ceil blue  
**CEIL**

galaxy blue  
**GALA**

grey  
**GREY**

hunter  
**HUNT**

navy  
**NAVY**





pewter  
**PEWT**

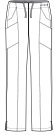



royal  
**ROYA**

teal  
**TEAL**

white  
**WHIT**

wine  
**WINE**

Product		6155	6255	6455	8155
					
Size	Regular	XXS - XL	XXS - XL	XXS - XL	XXS - XL
	Plus	1X - 5X	1X - 5X	1X - 5X	1X - 5X
black	BLAC				
caribbean	CARI				
ceil blue	CEIL				
eggplant	EGGP				
galaxy blue	GALA				
grape	GRAP				
grey	GREY				
hot pink	HTPK				
hunter	HUNT				
navy	NAVY				
pewter	PEWT				
royal	ROYA				
teal	TEAL				
white	WHIT				
wine	WINE				

Product		5155	5255	6355	5355
					
Size	Regular	XXS - XL	XXS - XL	XS - 5X	XS - 5X
	Petite (Short)	XXS - XL	XXS - XL		XS - 3X
	Tall	XS - XL	XS - XL		S - 3X
	Plus	1X - 5X	1X - 5X		
	Plus Petite	1X - 3X	1X - 3X		
	Plus Tall	1X - 3X	1X - 3X		
black	BLAC				
caribbean	CARI				
ceil blue	CEIL				
eggplant	EGGP				
galaxy blue	GALA				
grape	GRAP				
grey	GREY				
hot pink	HTPK				
hunter	HUNT				
navy	NAVY				
pewter	PEWT				
royal	ROYA				
teal	TEAL				
white	WHIT				
wine	WINE				



## **STRETCH COMFORT**

Poly-rayon-spandex blend premium fabric is soft to the touch, yet durable and wrinkle resistant for comfort and easy care.

Industry standard colors, embroidery-friendly designs and subtle details ensure a consistent appearance for your group.

## **GROUP FRIENDLY**

## **GREAT VALUE**

Top tier fabric, design and details make WonderWink Next an exceptional value.



WOMEN'S  
**V-NECK TOP**

6119 "Charlotte"



- Women's Modern Fit.
- Two front lower pockets including one WonderWink signature triple pocket, hidden three part utility loop, and WonderWink logo charm.
- Inset shoulder detail with badge loop.
- WonderWink embroidered logo at sleeve opening.
- Vented lower back.



BLAC, CARI, CEIL, ELEL, GALA, GRAP, GREY, HUNT,  
NAVY, OLIV, PEWT, ROYA, TEAL, WHIT, WINE

65% Polyester / 32% Rayon / 3% Spandex

**XXS - 5X**  
Size M length: 26 ¾"

WOMEN'S  
**MOCK WRAP TOP**

6219 "Elizabeth"



- Women's Modern Fit.
- Two front lower pockets including one WonderWink signature triple pocket and hidden three part utility loop.
- Inset shoulder detail with badge loop.
- Empire waist with WonderWink logo charm and WonderWink embroidered logo at sleeve opening.
- Adjustable back tabs with two snap positions.
- Vented sides.



BLAC, CARI, CEIL, ELEL, GALA, HUNT,  
NAVY, PEWT, ROYA, TEAL, WHIT, WINE

65% Polyester / 32% Rayon / 3% Spandex

**XS - 3X**  
Size M length: 27 ¾"

black <b>BLAC</b>	caribbean <b>CARI</b>	ceil blue <b>CEIL</b>	electric lilac <b>ELEL</b>	grape <b>GRAP</b>	galaxy blue <b>GALA</b>	grey <b>GREY</b>	hunter <b>HUNT</b>
navy <b>NAVY</b>	olive <b>OLIV</b>	pewter <b>PEWT</b>	royal <b>ROYA</b>	teal <b>TEAL</b>	white <b>WHIT</b>	wine <b>WINE</b>	

WOMEN'S  
**WARM-UP STYLE JACKET**

8119 "Boston"



- Women's Modern Fit.
- Two front lower seam pockets, one hidden mesh cell phone pocket, and WonderWink logo charm.
- Elastic under cuff and back hem.
- Nylon coil zipper with WonderWink zipper pull.
- WonderWink embroidered logo at mid-arm.



BLAC, CARI, CEIL, ELEL, GALA, HUNT,  
NAVY, PEWT, ROYA, TEAL, WHIT, WINE

65% Polyester / 32% Rayon / 3% Spandex

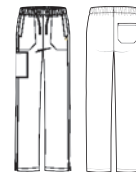
**XS - 3X**  
Size M length: 27 1/4"

WOMEN'S  
**ELASTIC DRAWSTRING PANT**

5119 "Logan"



- Women's Modern Fit.
- Full elastic waist pant with drawstring.
- Two side seam pockets with WonderWink logo charm, one cargo pocket, one cell phone pocket, and one back pocket.
- WonderWink embroidered logo on cargo pocket.
- Slightly slimmer fit through pant leg.
- Vented bottom.



BLAC, CARI, CEIL, ELEL, GALA, GRAP, GREY, HUNT,  
NAVY, OLIV, PEWT, ROYA, TEAL, WHIT, WINE

65% Polyester / 32% Rayon / 3% Spandex

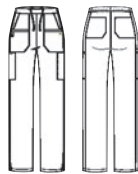
**XXS - 5X, Petite: XXS - 3X, Tall: XS-3X**  
Size M leg opening 8 3/4"

# WOMEN'S ELASTIC WAIST PANT

5219 "Madison"






- Women's Modern Fit.
- Flat front pant with back elastic and Interior drawstring.
- Two front double slant pockets with WonderWink logo charm, two cargo pockets, one cell phone pocket, two back pockets,
- WonderWink embroidered logo on cargo pocket
- Slightly slimmer fit through pant leg.
- Vented bottom.





BLAC, CARI, CEIL, ELEL, GALA, HUNT,  
NAVY, PEWT, ROYA, TEAL, WHIT, WINE

65% Polyester / 32% Rayon / 3% Spandex

**XXS - 5X, Petite: XXS - 3X, Tall: XS-3X**  
Size M leg opening 8 1/4"

Product	6119  CHARLOTTE	6219  ELIZABETH	8119  BOSTON
Size	XXS - 5X	XS - 3X	XS - 3X
BLAC			
CARI			
CEIL			
ELEL			
GALA			
GRAP			
GREY			
HUNT			
NAVY			
OLIV			
PEWT			
ROYA			
TEAL			
WHIT			
WINE			

Product	5119  LOGAN	5219  MADISON
Size	XXS - 5X	XS-3X
Petite	XXS - 3X	
Tall	XS - 3X	
BLAC		
CARI		
CEIL		
ELEL		
GALA		
GRAP		
GREY		
HUNT		
NAVY		
OLIV		
PEWT		
ROYA		
TEAL		
WHIT		
WINE		

navy  
**NAVY**

olive  
**OLIV**

pewter  
**PEWT**

royal  
**ROYA**

teal  
**TEAL**

white  
**WHIT**

wine  
**WINE**



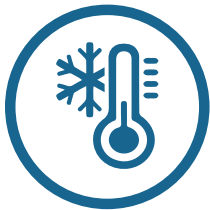
# HIGH PERFORMANCE

90% Polyester / 10% Spandex

Ultra smooth, **double layer** fabric for maximum moisture wicking capacity.

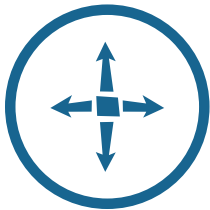
Moisture is wicked away from the body to the outermost layer, keeping the body dry and fresh.

Crafted from High Performance stretch yarn, our HP uniforms provides unparalleled knit level comfort with woven durability.



## COOLING

Keeps you cool when things heat up



## STRETCH

Stretch fabric as flexible as you are



## SOIL RELEASE

Say goodbye to yesterday's mess



## WICKING

Stay dry and cozy all day long





## WOMEN'S V-NECK TOP

6112 "Sync"



- Women's Modern Fit.
- Two front lower top loading pockets with hidden three part utility loop and one zipper pocket with yellow mesh.
- Slimming style lines.
- Back seaming for flattering fit.
- Vented lower back.



## WOMEN'S BOAT NECK TOP

6212 "Neo"



- Women's Modern Fit.
- Two front lower top loading pockets with hidden three part utility loop, one zipper pocket with yellow mesh.
- Slimming style lines.
- Contrast paneling on all colors except BLAC.
- Back seaming for flattering fit.
- Vented lower back.



BLAC, CARI, CEIL, FUSA, GAPP, GRAP, GREY,  
NAVY, ORCH, PEWT, ROYA, TURB, WHIT, WINE

BLAC, CARI, CEIL, FUSA, GAPP, GRAP, GREY,  
NAVY, ORCH, PEWT, ROYA, TURB, WHIT, WINE

90% Polyester / 10% Spandex

90% Polyester / 10% Spandex

**XXS - 3X**

Size M length: 26 ¾"

**XXS - 3X**

Size M length: 27 ¾"

black  
**BLAC**

caribbean  
**CARI**

ceil blue  
**CEIL**

fuchsia  
**FUSA**

green apple  
**GAPP**

grape  
**GRAP**

grey  
**GREY**



WOMEN'S  
**MOCK WRAP TOP**

6312 "Axis"



- Women's Modern Fit.
- Two front lower top loading welt pockets and one welt cell phone pocket.
- Slimming style lines.
- Back seaming for flattering fit.
- Vented lower back.



BLAC, CARI, CEIL, FUSA, GAPP, GRAP, GREY,  
NAVY, ORCH, PEWT, ROYA, TURB, WHIT, WINE

90% Polyester / 10% Spandex

**XXS - 3X**  
Size M length: 27 ¾"

WOMEN'S  
**STYLIZED V-NECK TOP**

6412 "Sequence"



- Women's Modern Fit.
- Two front lower top loading pockets with hidden three part utility loop and one hidden zip pocket at wearers right.
- Asymmetrical V-neck banding.
- Badge loop at wearers right shoulder.
- Stylized front seaming.
- Vented sides.



BLAC, FUSA, NAVY, PEWT, ROYA

90% Polyester / 10% Spandex

**XXS - 3X**  
Size M length: 26 ¾"

navy  
**NAVY**

orchid  
**ORCH**

pewter  
**PEWT**

royal  
**ROYA**

turquoise blue  
**TURB**

white  
**WHIT**

wine  
**WINE**

## WOMEN'S SNAP FRONT JACKET

8312 "Prism"



- Women's Modern Fit.
- Two front lower top loading pockets with hidden three part utility loop and one inner mesh cell phone pocket.
- Modern triangular style lines. Dyed-to-match snaps.
- Two piece sleeve with elastic at back sleeve hem.
- Vented sides.



BLAC, CARI, CEIL, FUSA, GAPP, GRAP, GREY,  
NAVY, ORCH, PEWT, ROYA, TURB, WHIT, WINE

90% Polyester / 10% Spandex

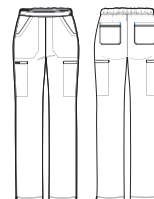
**XXS - 3X**  
Size M length: 29 ¾"

## WOMEN'S MODERN STRAIGHT LEG PULL ON PANT

5112 "Hybrid"



- Women's Modern Fit.
- Full elastic waistband with flat front
- Two front slash pockets, two welt cargo pockets, and two back pockets.
- Vented bottom.
- Great for food service.



BLAC, CARI, CEIL, FUSA, GAPP, GRAP, GREY,  
NAVY, ORCH, PEWT, ROYA, TURB, WHIT, WINE

90% Polyester / 10% Spandex

**XXS - 3X, Petite: XXS - 3X, Tall: XS - 3X**  
Size M leg opening: 8 ¼"

black  
**BLAC**

caribbean  
**CARI**

ceil blue  
**CEIL**

fuchsia  
**FUSA**

green apple  
**GAPP**

grape  
**GRAP**

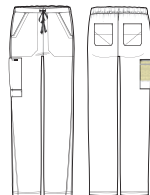
grey  
**GREY**

# WOMEN'S BOOT CUT CARGO PANT

5212 "Ion"



- Women's Modern Fit.
- Back elastic full drawstring waistband.
- Two front slash pockets, two back pockets, one cargo pocket with hidden yellow mesh cell phone pocket, and one mini pocket below cargo.
- Great for food service.



BLAC, CARI, CEIL, FUSA, GAPP, GRAP, GREY,  
NAVY, ORCH, PEWT, ROYA, TURB, WHIT, WINE

90% Polyester / 10% Spandex

**XXS - 3X, Petite: XXS - 3X, Tall: XS - 3X**  
Size M leg opening: 9 1/4"



Product	6112 SYNC	6212 NEO	6312 AXIS	6412 SEQUENCE
Size (Regular)	XXS - 3X	XXS - 3X	XXS - 3X	XXS - 3X
BLAC				
CARI				
CEIL				
FUSA				
GAPP				
GRAP				
GREY				
NAVY				
ORCH				
PEWT				
ROYA				
TURB				
WHIT				
WINE				

Product	8312 PRISM	5112 HYBRID	5212 ION
Size (Regular)	XXS - 3X	XXS - 3X	XXS - 3X
Size (Petite)		XXS - 3X	XXS - 3X
Size (Tall)		XS - 3X	XS - 3X
BLAC			
CARI			
CEIL			
FUSA			
GAPP			
GRAP			
GREY			
NAVY			
ORCH			
PEWT			
ROYA			
TURB			
WHIT			
WINE			

navy  
**NAVY**

orchid  
**ORCH**

pewter  
**PEWT**

royal  
**ROYA**

turquoise blue  
**TURB**

white  
**WHIT**

wine  
**WINE**





# WonderWink Lab Coats



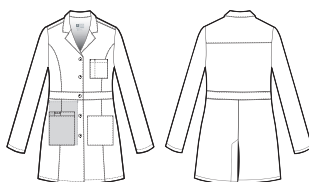
Premium fabrics that are crisp white, soft to the touch and durable for long shifts ahead. Discover lab coats that are both group friendly and the best value in the industry.

WOMEN'S  
**BASIC LAB COAT**

700



- Women's Classic Fit and True-Plus Fit.
- Two front lower pockets with utility loop, one pen slot, one cell phone pocket, one chest pocket with pen slot, and one inside tablet pocket.
- Inset waistband.
- Vented Back.



WHIT

65% Polyester / 35% Cotton

**XXS - 5X**  
Size M length: 33 ½"

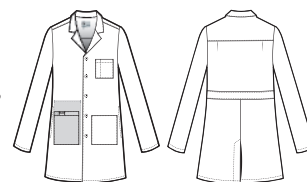


MEN'S  
**BASIC LAB COAT**

703



- Men's Classic Fit.
- Two front lower pockets with utility loop, one pen slot, one cell phone pocket, one chest pocket with pen slot, and one inside tablet pocket.
- Back yoke with pleats.
- Inset waistband.
- Vented back.



WHIT

65% Polyester / 35% Cotton

**XS - 5X**  
Size M length: 35 ½"



WOMEN'S  
**FASHION LAB COAT**

7019



WOMEN'S  
**JACKET WITH ZIP POCKET**

7112



- Women's Modern Fit.
- Two front lower double pockets with hidden three part utility loop and WonderWink logo charm.
- Stylized collar with mitered corners. Front and back Inset shoulder seaming.
- Hidden shoulder loop.
- Inset back waistband.
- Two vented back.



WHIT

65% Polyester / 32% Rayon / 3% Spandex

**XS - 3X**

Size M length: 35 ¾"



- Women's Modern Fit.
- Two front lower top loading pockets with hidden three part utility loop and one concealed zipper mesh pocket. WonderWink HP branding on left pocket.
- Button front closure.
- Bartack stitching at stress points.
- Vented lower back.



BLAC WHIT

90% Polyester / 10% Spandex

**XS - 3X**

Size M length: 32 ¾"





# Best styles for groups.



**100**  
Unisex  
V-Neck Top



**101**  
Women's  
V-Neck Top



**102**  
Women's  
Mock Wrap Top



**103**  
Men's  
V-Neck Top



**200**  
Women's  
Short Sleeve  
Snap Front Top



**201**  
Women's  
Smock



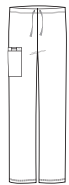
**300**  
Unisex  
Vest



**800**  
Unisex  
Snap Front  
Jacket



**803**  
Men's  
Blazer



**500**  
Unisex  
Drawstring  
Cargo Pant



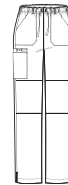
**501**  
Women's  
Pull-On  
Cargo Pant



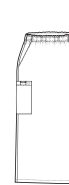
**502**  
Women's  
Flare Leg Pant



**503**  
Men's  
Cargo Pant



**504**  
Women's  
Straight Leg  
Cargo Pant



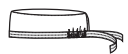
**701**  
Women's  
Pull-On  
Cargo Skirt



**145**  
Women's  
Maternity  
Mock Wrap Top



**545**  
Women's  
Maternity  
Cargo Pant



**400**  
Unisex  
Solid Scrub Cap



**6155**  
Women's  
Stylized  
V-neck Top



**6255**  
Women's  
Basic  
V-neck Top



**6455**  
Women's  
Mock Wrap Top



**8155**  
Women's  
Crew Neck  
Warm Up Jacket



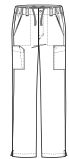
**5155**  
Women's  
Flat Front  
Double Cargo Pant



**5255**  
Women's  
Drawstring  
Pant



**6355**  
Men's  
V-neck Top



**5355**  
Men's  
Flat Front  
Cargo Pocket Pant



**6119**  
Charlotte  
Women's  
V-neck top



**6219**  
Faith  
Women's mock  
wrap top



**8119**  
Boston  
Women's warm-up  
style jacket



**5119**  
Logan  
Women's elastic  
waist pant with  
drawstring



**5219**  
Madison  
Women's elastic  
waist Pant



## WonderWink Lab Coats



**700**  
Women's  
Basic Lab Coat



**703**  
Men's  
Basic Lab Coat



**7019**  
Women's  
Fashion Lab Coat



**7112**  
Jacket with  
Zip Pocket



**6112**  
V-Neck Top



**6212**  
Boat Neck Top



**6312**  
Mock Wrap Top



**6412**  
Stylized V-Neck Top



**8312**  
Snap Front  
Jacket



**5112**  
Modern  
Straight Leg  
Pull On Pant



**5212**  
Cinch  
Cargo Pant

# The WonderWink Fit Difference : EXPECT COMFORT

## NATURAL WAIST

### WOMEN'S MODERN FIT:

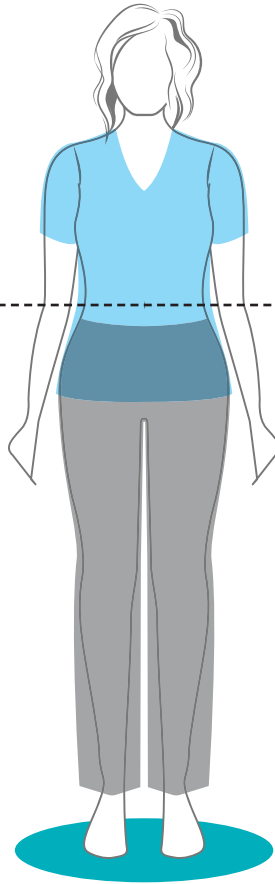
Cut closer to your shape for a flattering and contoured look without sacrificing comfort.

### WOMEN'S CLASSIC FIT:

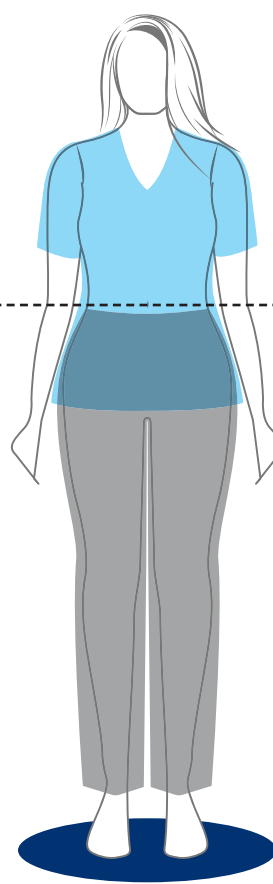
Lightly shaped to the body for mobility and ease of movement. Comfortable and stylish in a relaxed fit.

### WOMEN'S TRUE-PLUS FIT:

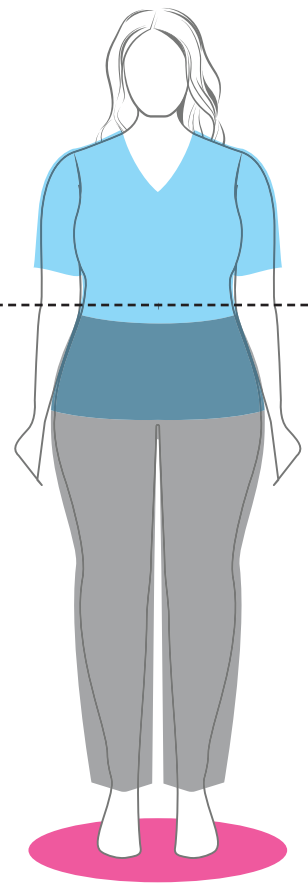
Fit exclusively for curvy shapes. Comfortable, flattering and unrestricted for an effortless look and feel.



**WOMEN'S  
MODERN FIT**



**WOMEN'S  
CLASSIC FIT**



**WOMEN'S  
TRUE-PLUS FIT**

Women's Modern Fit	XXS	XS	S	M	L	XL	2X	3X	4X	5X
Ready-to-Wear	0	2-4	6-8	10-12	14-16	18-20	22-24	26-28	30-32	34-36
Bust	30-31	32-33	34-35	36-38	39-42	43-46	47-50	51-54	55-58	59-62
Waist	22-23	24-25	26-27	28-30	31-34	35-38	39-42	43-46	47-50	51-54
Hip	33-34	35-36	36-37	38-40	41-44	45-48	49-52	53-56	59-62	63-66

Inseam: Regular-31", Petite-28 ½", Tall-33"

Women's Classic Fit	XXS	XS	S	M	L	XL	2X	3X	4X	5X
Ready-to-Wear	0	2-4	6-8	10-12	14-16	18-20	22-24	26-28	30-32	34-36
Bust	31-32	33-34	35-36	37-39	40-43	44-47	48-51	52-55	56-59	60-63
Waist	22-23	24-25	26-27	28-30	31-34	35-38	39-42	43-46	47-50	51-54
Hip	33-34	35-36	37-38	39-41	42-45	46-49	50-53	54-57	58-61	62-65

Inseam: Regular-31", Petite-28 ½", Tall-33"

Women's True-Plus Fit	1X	2X	3X	4X	5X
Ready-to-Wear	16-18	20-22	24-26	28-30	32-34
Bust	44-46	47-50	51-54	55-58	59-63
Waist	36-38	39-42	43-46	47-50	51-55
Hip	46-48	49-52	53-56	57-60	61-64

Inseam: Regular-31", Petite-28 ½", Tall-33"

#### How to take your measurements:

**Chest** | Exhale, then measure under your arms, around the fullest part of your chest.  
**Length** | We recommend Petites for women up to 5'2", Regular length up to 5'6", and Tall length for 5'7" and above / Short for men up to 5'7", Regular length up to 5'9", and Tall length for 6' and above.

**Waist** | Keep the tape loose and measure around your natural waistline.  
**Hip** | Standing with your feet slightly apart, measure around the fullest part of your body.  
**Inseam** | Measure from the crotch to the bottom of the leg.

### NATURAL WAIST

#### UNISEX FIT:

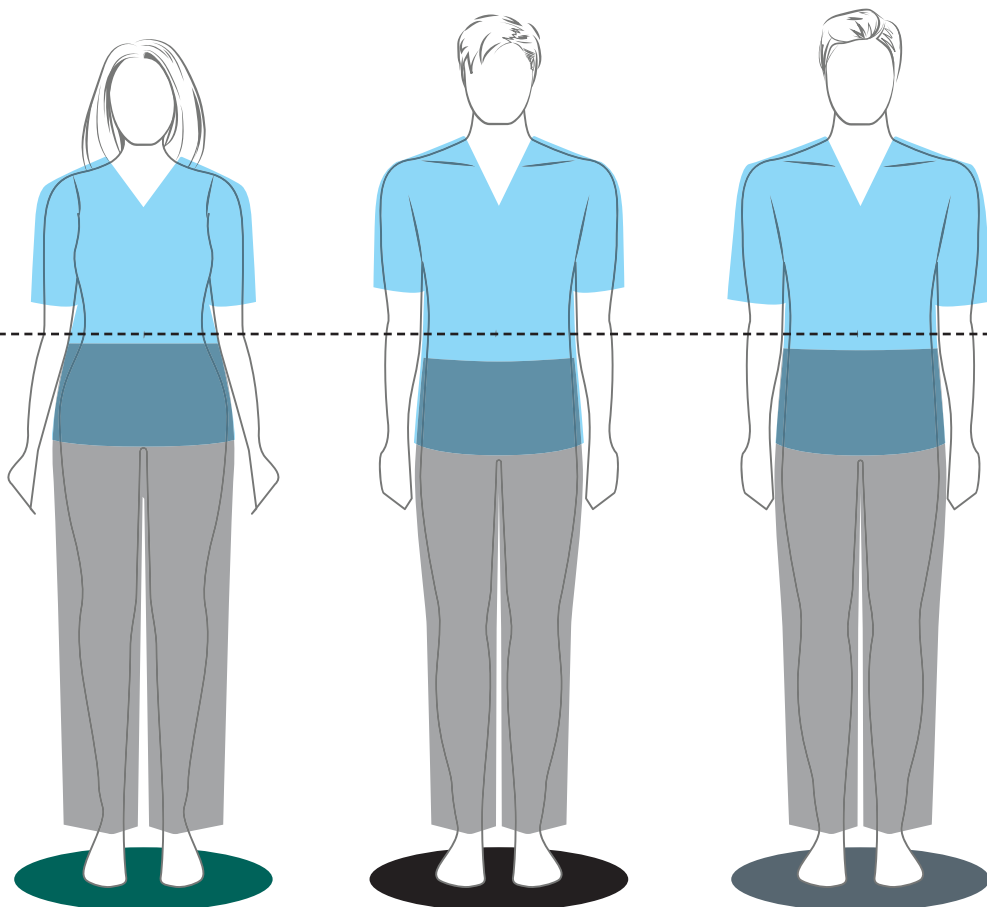
Relaxed and roomy to accomodate a full range of shapes and sizes.

#### MEN'S MODERN FIT:

Built for a man, this garment is cut slimmer to the body for a more modern, tailored shape.

#### MEN'S CLASSIC FIT:

Cut looser and more relaxed for an unrestricted fit and a full range of movement.



**UNISEX  
FIT**

**MEN'S  
MODERN FIT**

**MEN'S  
CLASSIC FIT**

Unisex Fit	XXS	XS	S	M	L	XL	2X	3X	4X	5X
<b>Chest/Bust</b>	31-32	33-34	35-37	38-40	41-44	45-48	49-52	53-56	57-60	61-64
<b>Waist</b>	23-24	25-26	27-29	30-32	33-36	37-40	41-44	45-48	49-52	53-57
<b>Hip</b>	32-33	34-35	36-38	39-41	42-45	46-49	50-53	54-57	58-61	62-65

Inseam: Regular-31", Petite-28 ½", Tall-33"

Men's Modern Fit	XS	S	M	L	XL	2X	3X	4X	5X
<b>Chest</b>	33-35	36-38	39-41	42-44	45-47	58-51	52-55	56-59	60-63
<b>Waist</b>	26-28	29-31	32-34	35-37	38-41	42-45	46-49	50-53	54-57
<b>Hip</b>	33-35	36-38	39-41	42-44	45-47	58-51	52-55	56-59	60-63

Inseam: Regular-31", Short-28 ½", Tall-34"

Men's Classic Fit	XS	S	M	L	XL	2X	3X	4X	5X
<b>Chest</b>	33-35	36-38	39-41	42-45	46-49	50-53	54-57	58-61	62-65
<b>Waist</b>	24-26	27-29	30-32	33-36	37-40	41-44	45-48	49-52	53-57
<b>Hip</b>	33-35	36-38	39-41	42-45	46-49	50-53	54-57	58-61	62-65

Inseam: Regular-31", Short-28 ½", Tall-34"



**EXPECT COMPLIMENTS.**



CID RESOURCES, INC.  
Coppell, TX 75019  
Toll Free Phone 877-554-3306  
Toll Free Fax 877-734-1508



[facebook.com/WonderWinkScrubs](https://facebook.com/WonderWinkScrubs)



[WonderWinkScrubs.com](https://WonderWinkScrubs.com)